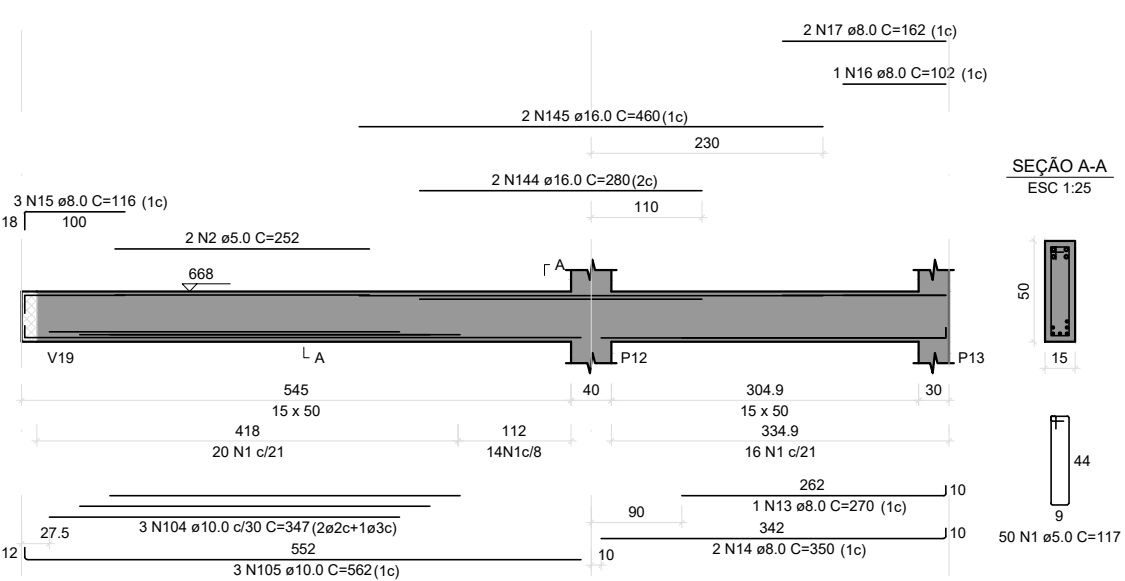


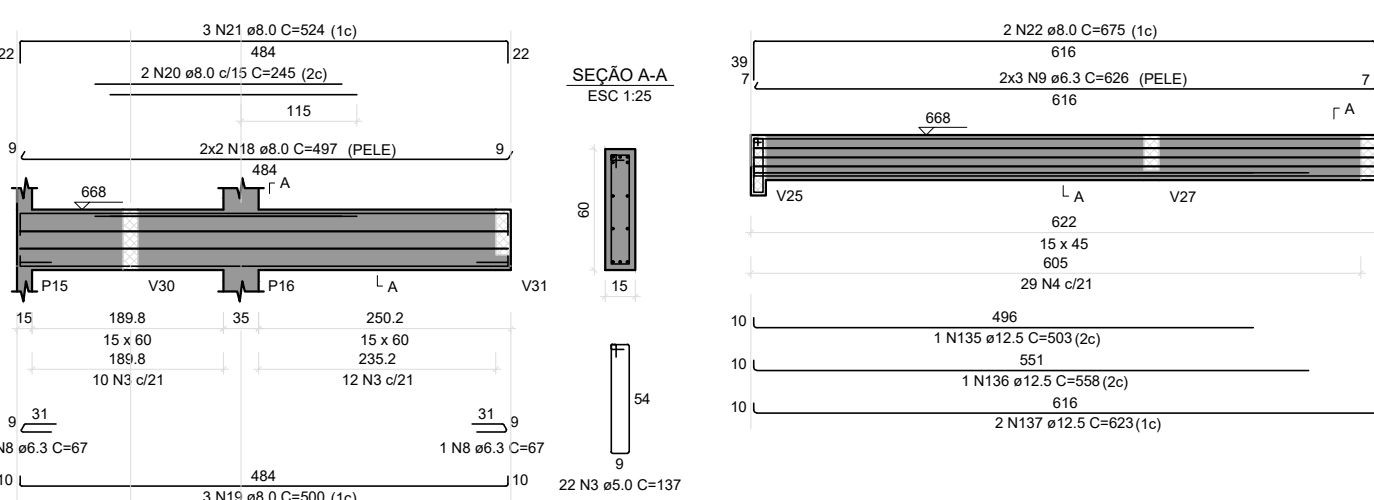
V4

ESC 1:50



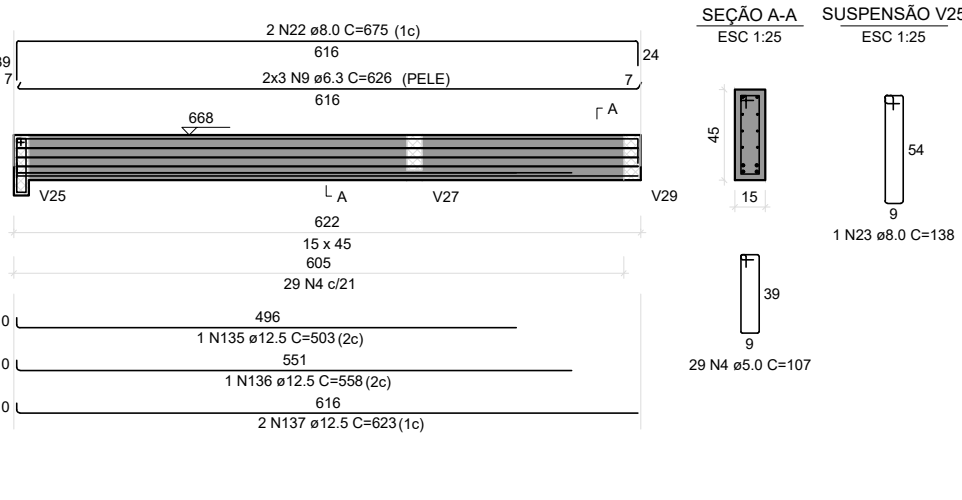
V5

ESC 1:50



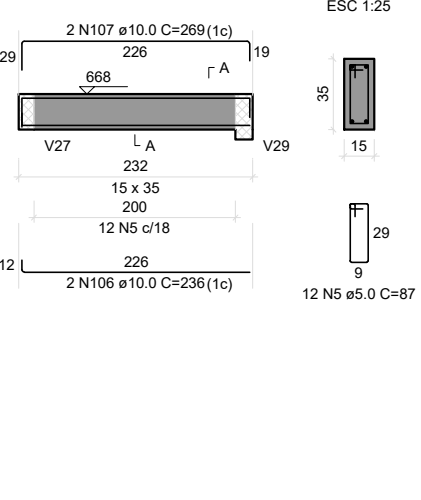
V6

ESC 1:50



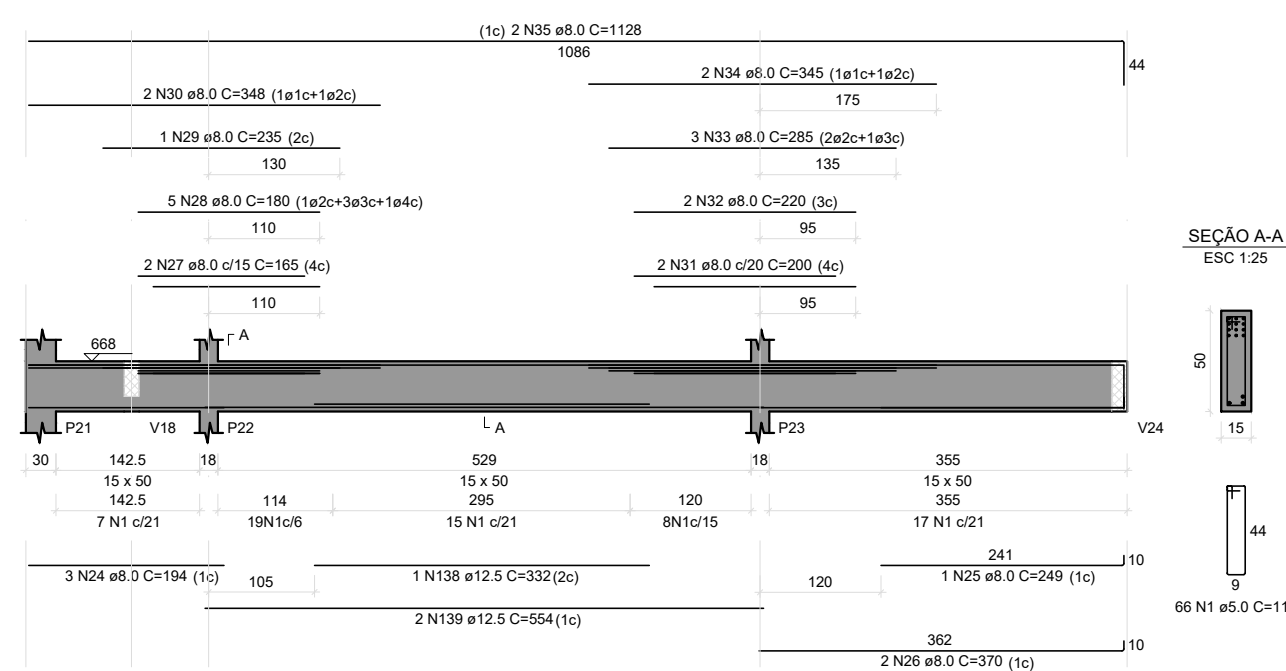
V7

ESC 1:50



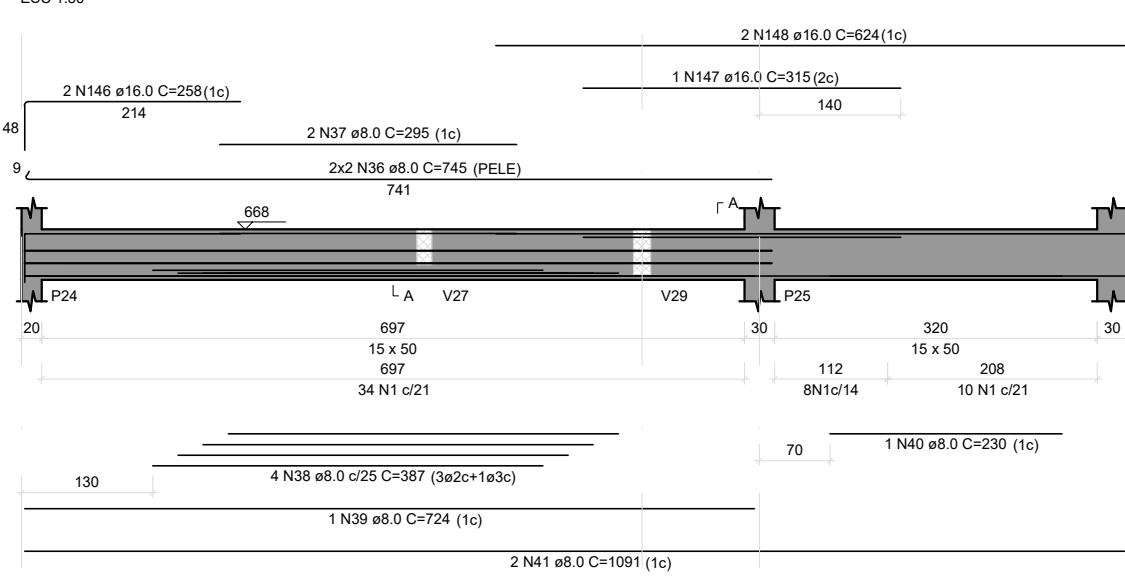
V8

ESC 1:50



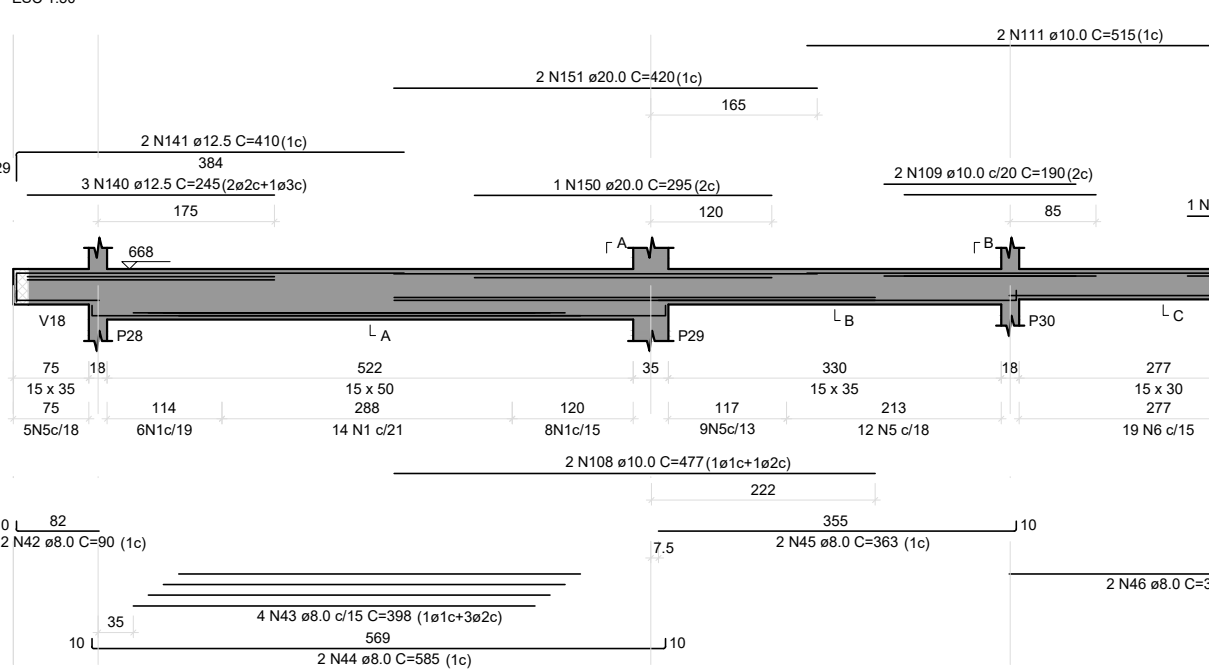
V9

ESC 1:50



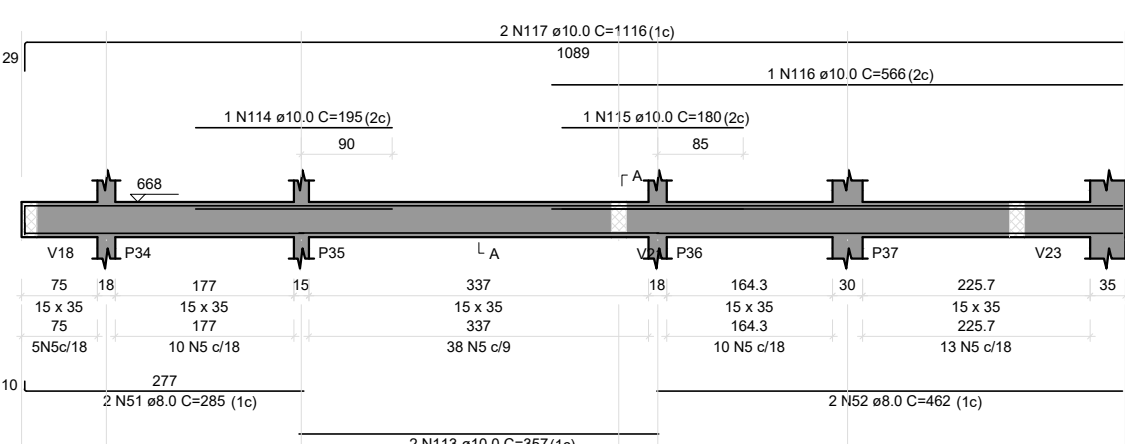
V10

ESC 1:50



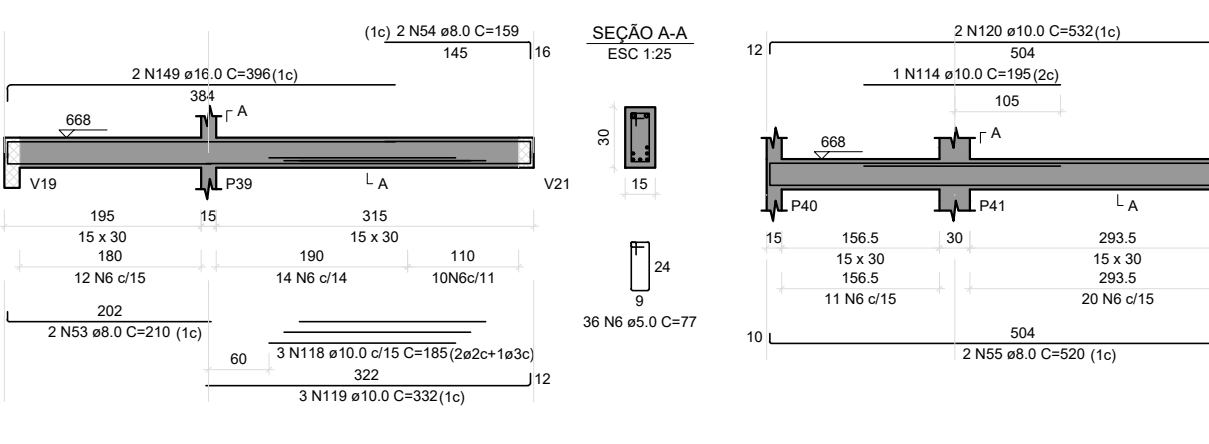
V12

ESC 1:50



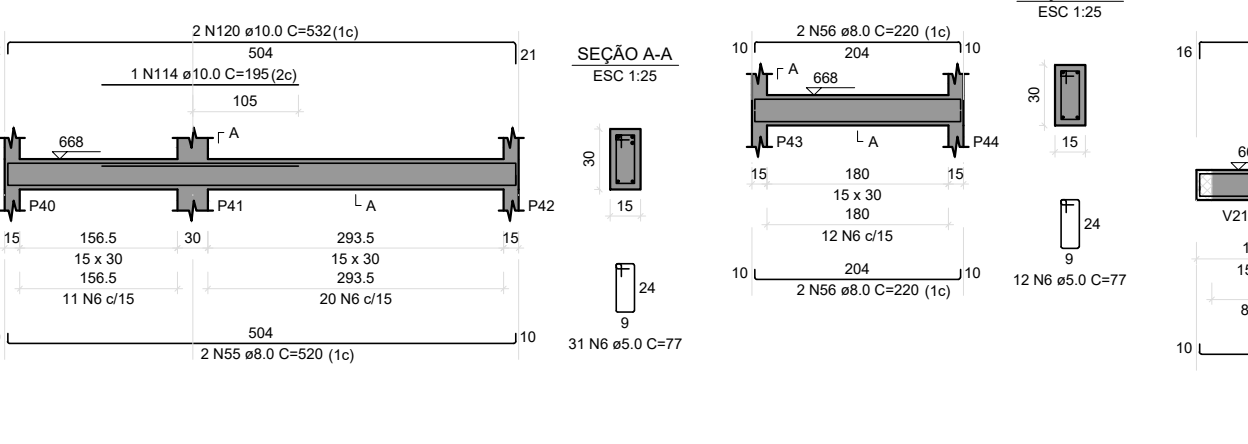
V13

ESC 1:50



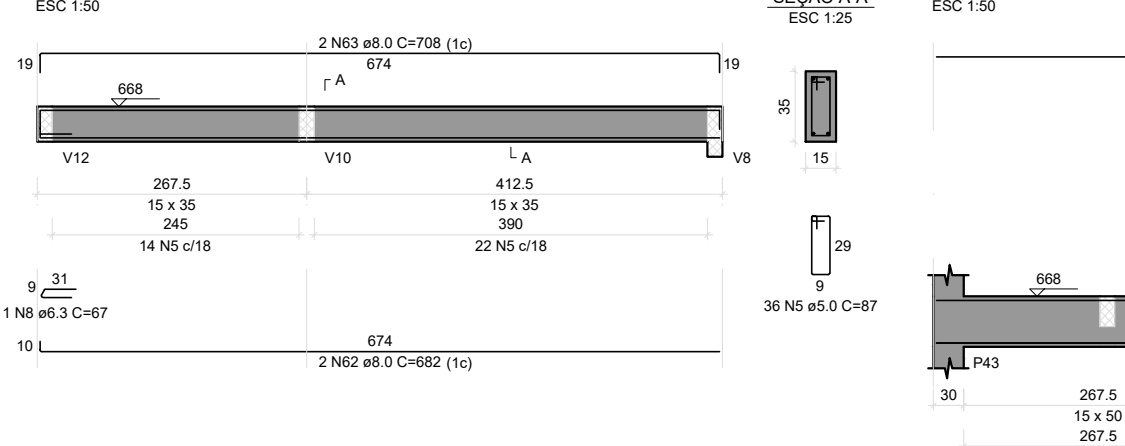
V14

ESC 1:50



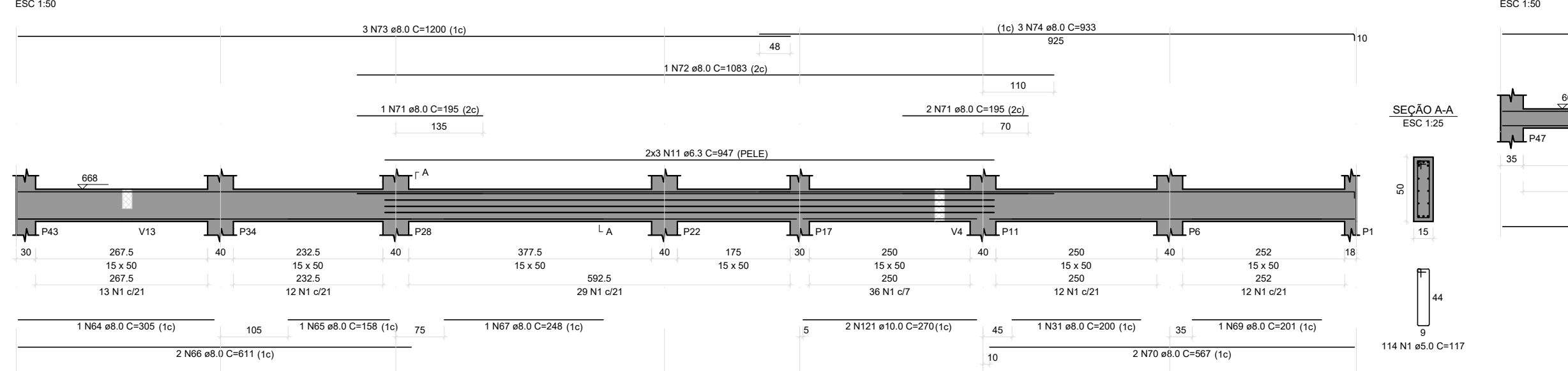
V18

ESC 1:50



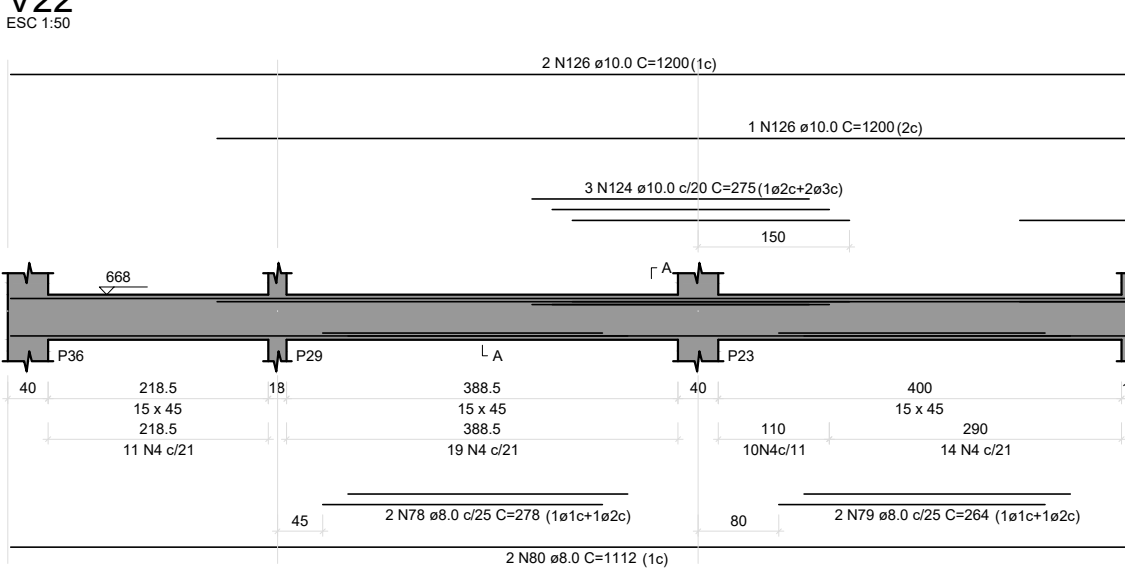
V19

ESC 1:50



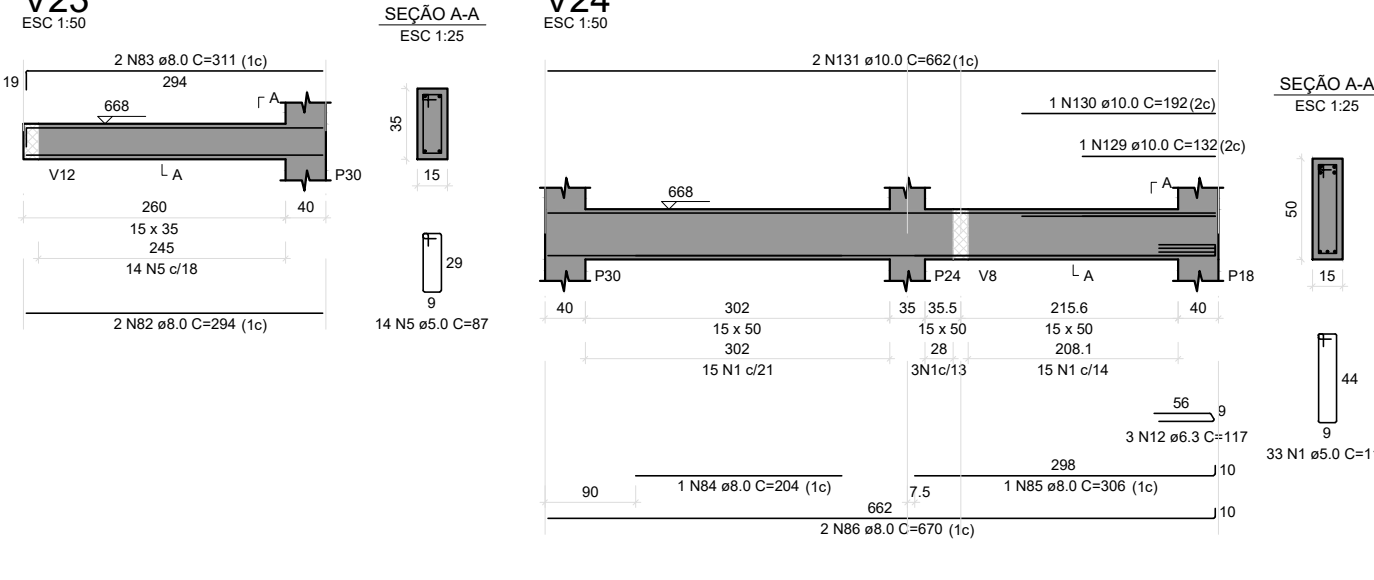
V22

ESC 1:50



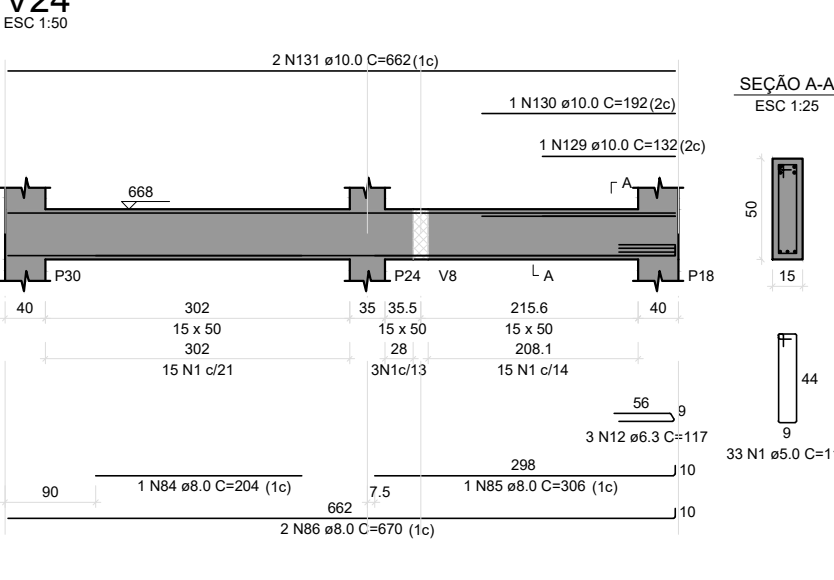
V23

ESC 1:50



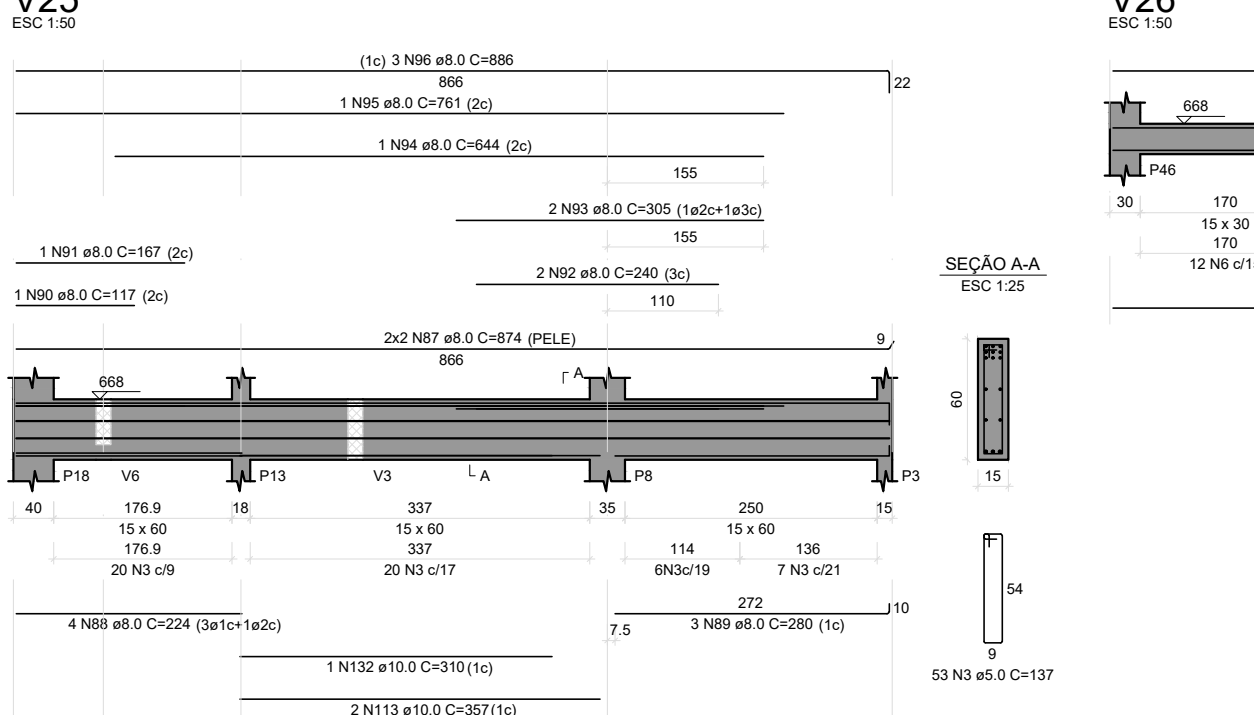
V24

ESC 1:50



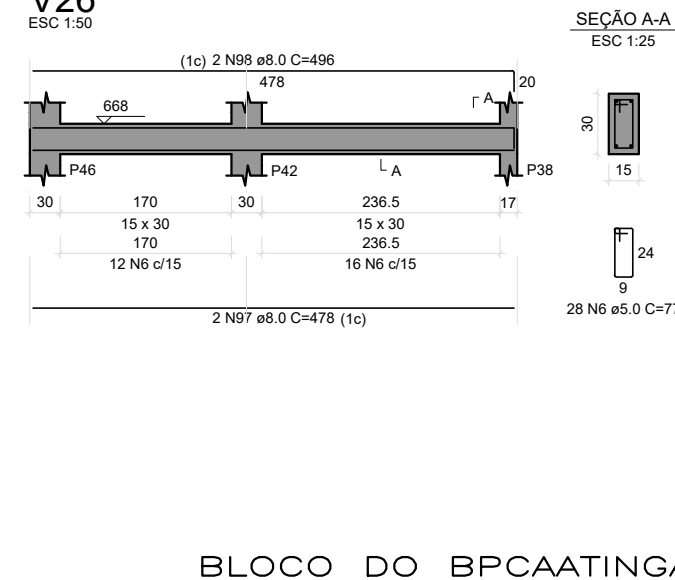
V25

ESC 1:50



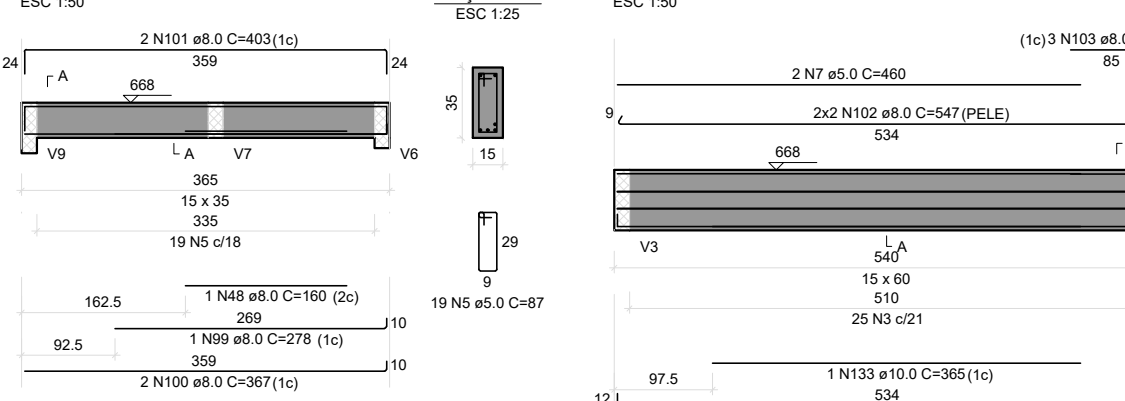
V26

ESC 1:50



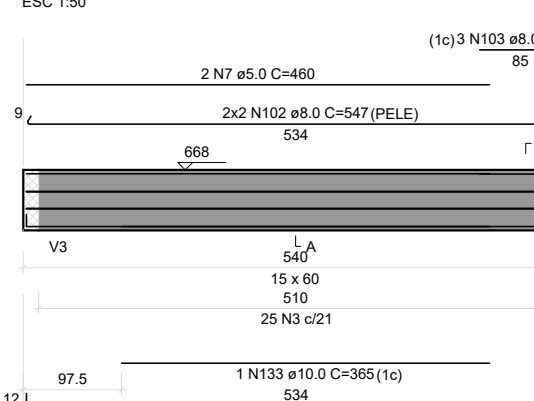
V27

ESC 1:50



V28

ESC 1:50



RELAÇÃO DO AÇO						
AÇO	N	DIAM	QUANT	C.UNIT	C.TOTAL	
CA50	1	5.0	343	117	40131	
	2	6.3	252	104	26208	
	3	8.0	100	137	13700	
	4	10.0	112	107	11984	
CA60	5	5.0	183	87	15921	
	6	6.3	368	77	27316	
	7	8.0	2	460	920	
	8	10.0	1	621	621	
CA60	9	6.3	6	626	3756	
	10	8.0	1	87	84	
	11	6.3	6	947	5682	
	12	6.3	3	117	351	
CA60	13	8.0	2	270	540	
	14	8.0	2	360	720	
	15	8.0	2	360	720	
	16	8.0	1	102	102	
CA60	17	8.0	1	102	102	
	18	8.0	4	497	1988	
	19	8.0	4	497	1988	
	20	8.0	2	245	490	
CA60	21	8.0	2	534	1068	
	22	8.0	2	675	1350	
	23	8.0	2	675	1350	
	24	8.0	3	194	582	
CA60	25	8.0	2	165	330	
	26	8.0	2	370	740	
	27	8.0	2	165	330	
	28	8.0	5	180	900	
CA60	29	8.0	2	235	470	
	30	8.0	2	348	696	
	31	8.0	3	200	600	
	32	8.0	3	200	600	
CA60	33	8.0	3	285	855	
	34	8.0	2	90	180	
	35	8.0	2	1128	2256	
	36	8.0	2	145	290	
CA60	37	8.0	2	295	590	
	38	8.0	2	387	774	
	39	8.0	1	724	724	
	40	8.0	2	90	180	
CA60	41	8.0	2	1091	2182	
	42	8.0	2	90	180	
	43	8.0	4	388	1552	
	44	8.0	2	314	628	
CA60	45	8.0	2	363	726	
	46	8.0	2	314	628	
	47	8.0	2	325	650	
	48	8.0	4	102	408	
CA60	49	8.0	4	396	1584	
	50	8.0	4	734	2936	
	51	8.0	2	462	924	
	52	8.0	2	462	924	
CA60	53	8.0	2	139	278	
	54	8.0	4	220	880	
	55	8.0	4	220	880	
	56	8.0	4	220	880	
CA60	57	8.0	2	145	290	
	58	8.0	2	328	656	
	59	8.0	2	328	656	
	60	8.0	2	328	656	
CA60	61	8.0	2	328	656	
	62	8.0	2	328	656	
	63	8.0	2	328	656	
	64	8.0	1	305	305	
CA60	65	8.0	2	158	316	
	66	8.0	2	158	316	
	67	8.0	1	248	248	
	68	8.0	1	248	248	
CA60	69	8.0	1	201	201	
	70	8.0	1	201	201	
	71	8.0	3	195	585	
	72	8.0	3	195	585	
CA60	73	8.0	3	1200	3600	
	74	8.0	3	633	1899	
	75	8.0	4	594	2376	
	76	8.0	4	594	2376	
CA60	77	8.0	2	338	676	
	78	8.0	2	279	558	
	79	8.0	2	264	528	
	80	8.0	2	1112	2224	
CA60	81	8.0	2	644	1288	
	82	8.0	2	644	1288	
	83	8.0	2	644	1288	
	84	8.0	1	204	204	
CA60	85	8.0	2	670	1340	
	86	8.0	2	670	1340	
	87	8.0	4	224	896	
	88	8.0	4	224	896	
CA60	89	8.0	2	336	672	
	90	8.0	1	117	117	
	91	8.0	1	187	187	
	92	8.0	2	240	480	
CA60	93	8.0	2	240	480	
	94	8.0	1	644	644	
	95	8.0	1	644	644	
	96	8.0	3	696	2088	
CA60	97	8.0	2	478	956	
	98	8.0	2	278	556	
	99	8.0	2	278	556	
	100	8.0	2	278	556	
CA60	101	8.0	3	105	315	
	102	8.0	3	105	315	
	103	8.0	3	105	315	
	104	8.0	3	105	315	
CA60	105	10.0	3	562	1686	
	106	10.0	2	236	472	
	107	10.0	2	269	538	
	108	10.0	2	477	954	
CA60	109	10.0	2	190	380	
	110	10.0	1	137	137	
	111	10.0	2	515	1030	
	112	10.0	2	489	978	
CA60	113	10.0	4	367	1468	
	114	10.0	2	185	370	
	115	10.0	1	180	180	
	116	10.0	1	180	180	
CA60	117	10.0	1	180	180	
	118	10.0	3	185	555	
	119	10.0	2	332	664	
	120	10.0	2	332	664	
CA60	121	10.0	2	332	664	
	122	10.0	2	181	362	
	123	10.0	2	391	782	
	124	10.0	3	275	825	
CA60	125	10.0	3	275	825	
	126	10.0	3	1200	3600	
	127	10.0	2	236	472	
	128	10.0	2	625	1250	
CA60	129	10.0	1	132	132	
	130	10.0	1	192	192	
	131	10.0	1	662	662	
	132	10.0	1	310	310	
CA60	133	10.0	1	366	366	
	134	10.0	1	366	366	
	135	12.5	1	503	503	
	136	12.5	1	503	503	
CA60	137	12.5	2	623	1246	
	138	12.5	2	332	664	
	139	12.5	2	544	1088	
	140	12.5	3	345	1035	
CA60	141	12.5	2	410	820	
	142	12.5	1	185	185	
	143	12.5	2	688	1376	
	144	16.0	2	380	760	
CA60	145	16.0	2	460	920	
	146	16.0	2	516	1032	
	147	16.0	1	315	315	
	148	16.0	2	524	1048	
CA60	149	20.0	1	396	792	
	150	20.0	1	396	792	
	151	20.0	2	420	840	

AÇO	DIAM (mm)	C.TOTAL (m)	PESO + 10% (kg)
CA50	6.3	101.8	27.4
	8.0	698.7	197.2
	10.0	259.5	71.7
	12.5	67	7
	16.0	43.5	35.75
CA60	20.0	11.3	70.
	5.0	1068.8	181.
PESO TOTAL (kg)			
CA50	753.5		
CA60	181.2		

VOLUME de concreto (C-35) = 10.78 m³

Área de forma = 132.01 m²